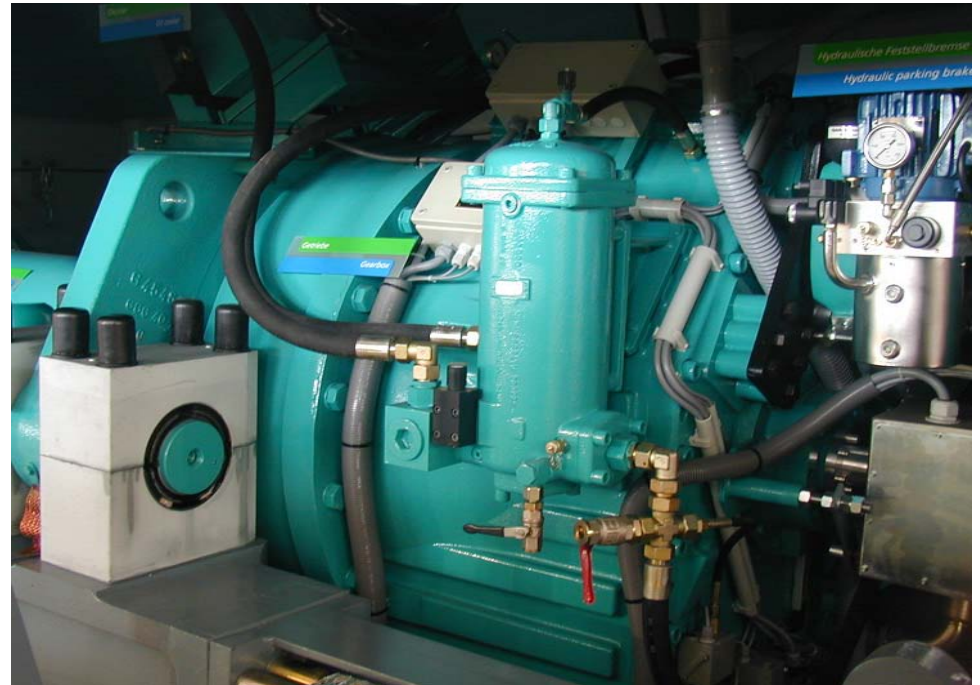


## Development of INT



Year 1998  
HP240.40  $\mu\text{m}$

Year 2001  
TWF1001.10VG.25G



## TWINFIL-Filtersystem

TWF 1001

filter  
cartridge  
with valve





## TWINFIL-Filtersystem

GE 1.5 with  
Winergy gearbox &  
TWF 1001



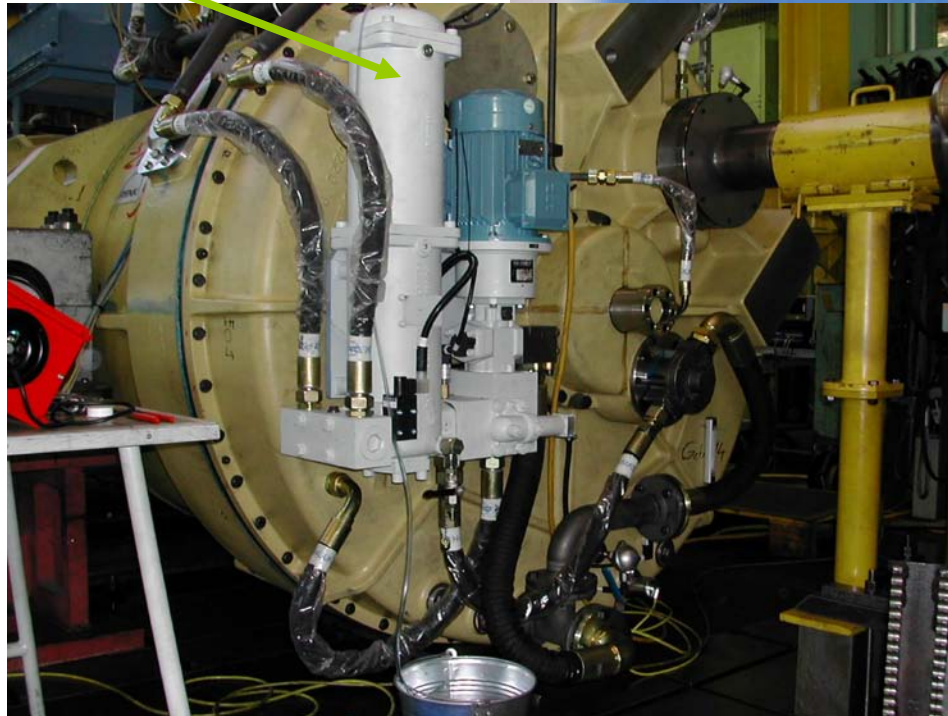
# LO-Unit Standard & Cold Weather Projekt

LF.401.10VG.... And TBF.3/4.3



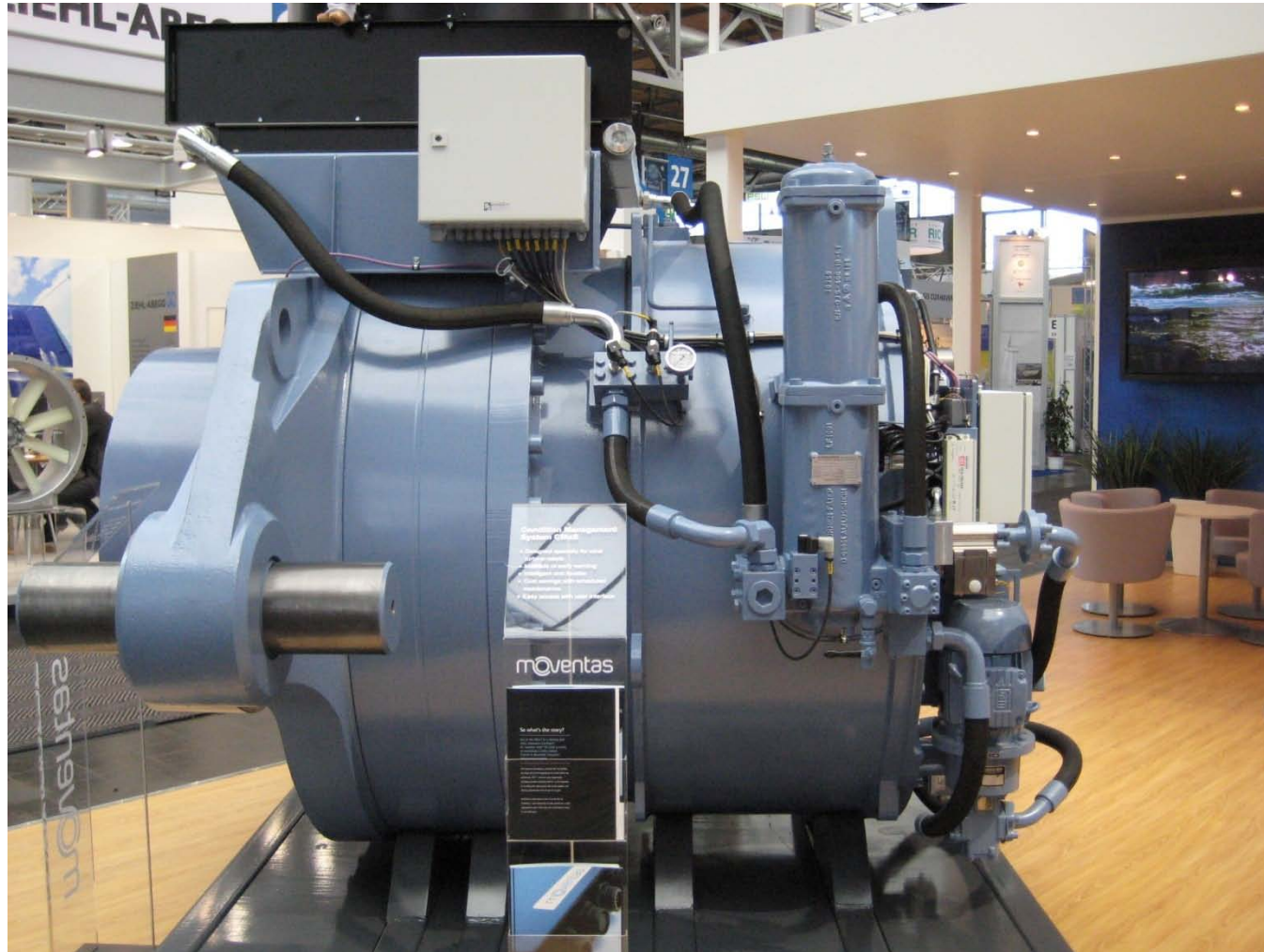
## TWINFIL-Filtersystem

REpower MM92 with  
RENK gearbox &  
TWF 1950

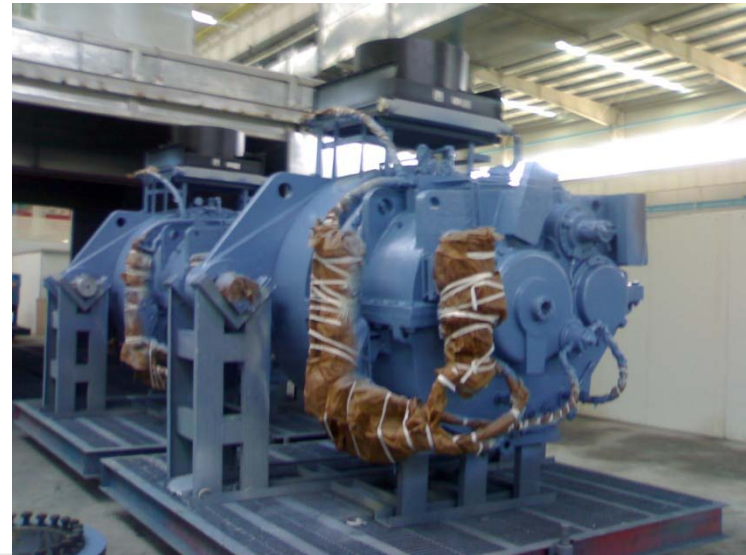




# Moventas 2,0MW

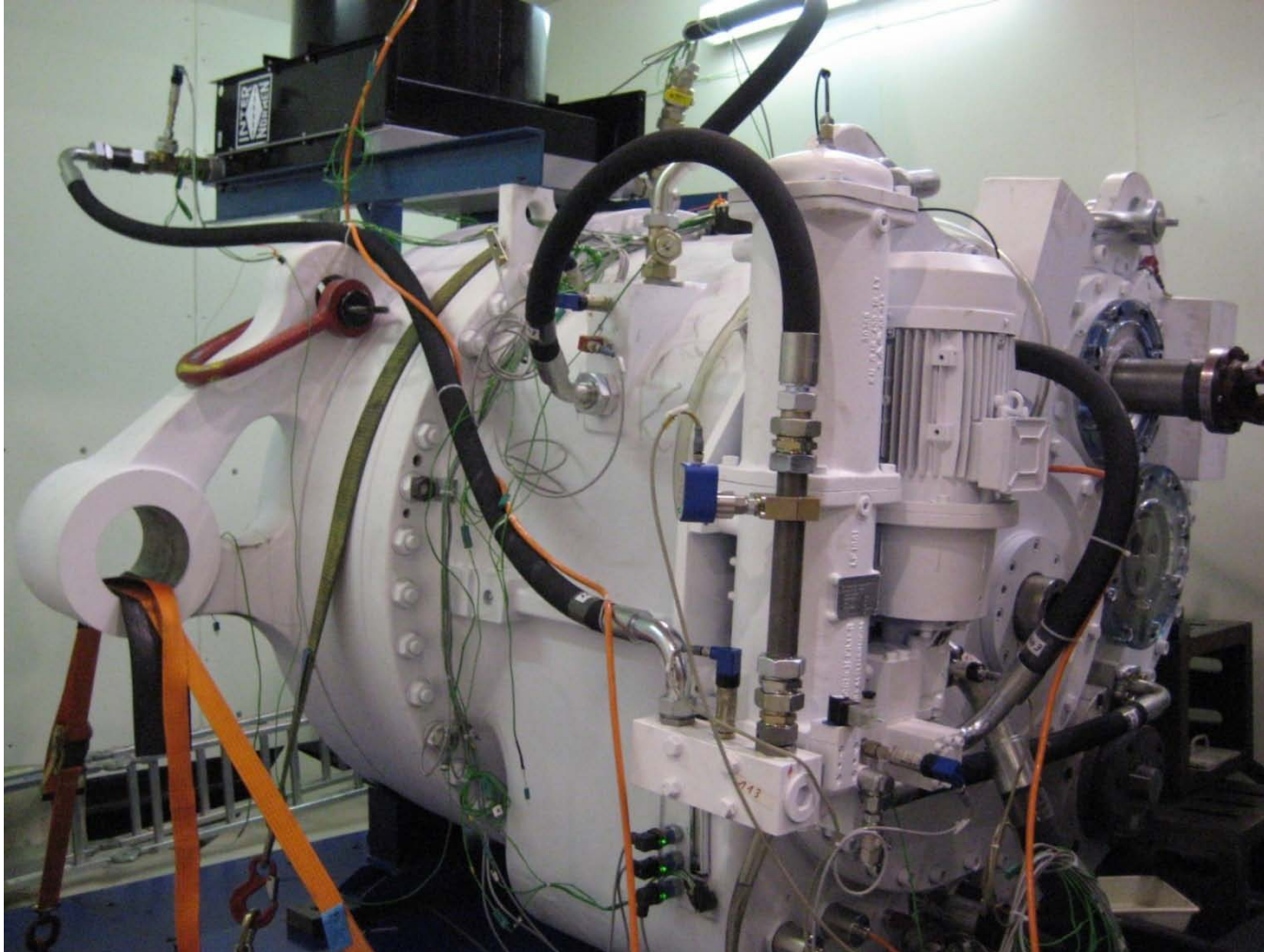


# Lubrication Systems (TWF1950, Nanjing for Nordex, Dongfang)





# Gearbox Testing and Final Inspection of Filter & Cooler





## TWINFIL-Filtersystem

REpower 5M/6MW with  
Winergy gearbox &  
TWF 6000  
Option with MPS



## Nanjing Gearbox: Flushing/Testing Unit for all Gearboxes

10pcs. LF.1950/Unit  
3 units installed

